



Be Kind; Be Respectful; Be the Best You Can Be



# Welcome to Long Sutton C of E Primary School

# Our Vision & Values

## OUR SCHOOL VISION

Through our core Christian values of Love, Courage & Hope, we nurture, encourage and challenge each unique child to be kind, be respectful and be the best they can be.

**Our Aims:** At Long Sutton Church of England Primary School, we aim to provide rich, memorable learning experiences which build character in each individual child. Strong relationships underpin all we do in our small church school, where we value and respect each other's uniqueness. We provide the space for all children to flourish and be the best they can be. Our broad curriculum inspires great learning through engagement with the outdoor environment and enables our children to develop positive emotional and mental health and an understanding of their place in the wider world. Our children are nurtured and challenged to become resilient learners with high aspirations.

## OUR VALUES

LOVE



COURAGE



HOPE



## OUR RULES

BE KIND



BE RESPECTFUL



BE THE BEST YOU CAN BE



# A Small School



- Space for every child to flourish
- Opportunity for all children to take on responsibilities
- Strong Relationships
- Strong sense of community and identity

# A Rural, Village School



- Strong sense of community across our 3 catchment villages and beyond
- Strong links with Lord Wandsworth College: use of facilities and subject expertise
- Well-located for outdoor learning within the local area

# A Church School

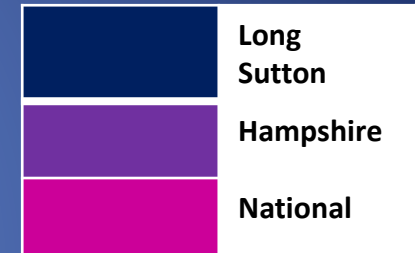
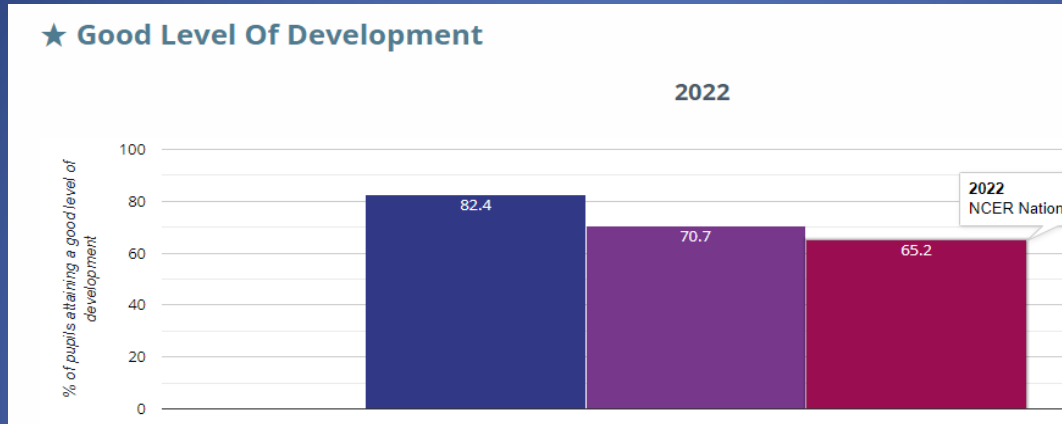


- A strong focus on moral development
- Excellent links and pastoral support from the More2Life Network of local churches: school clubs, Collective Worship, Church Services and RE curriculum support
- Collective Worship: an opportunity to learn from the teachings of the Bible and reflect on our own place in the world

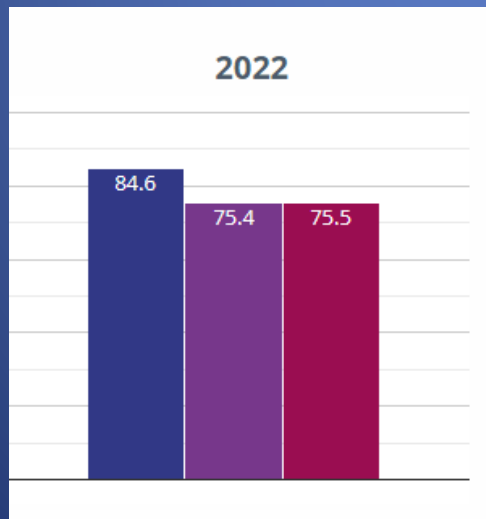


# High Attainment: 2022 Results

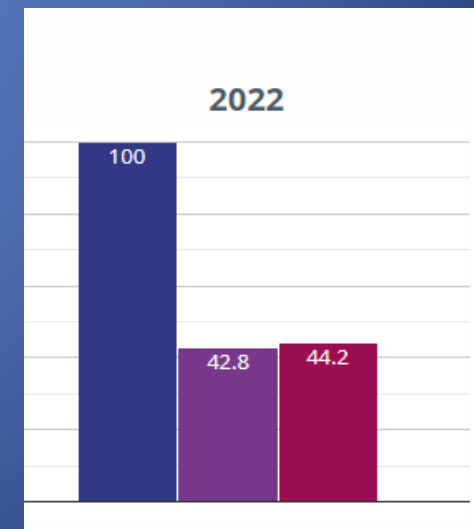
## EYFS



## Y1 Phonics



## Y2 Phonics Resit

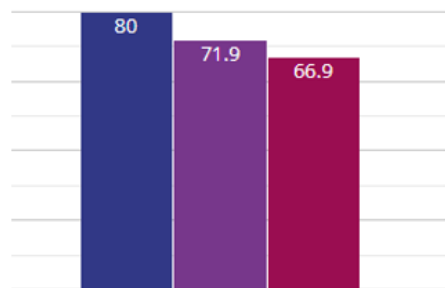


# High Attainment: 2022 Results

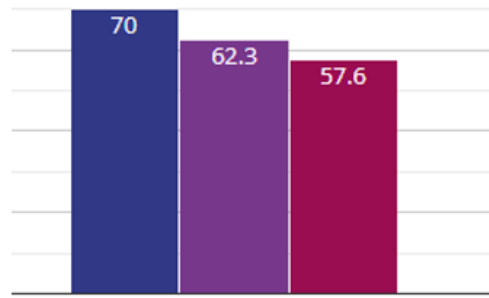


## Key Stage 1

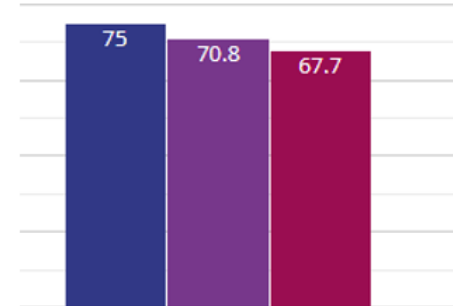
### Reading Expected Standard+



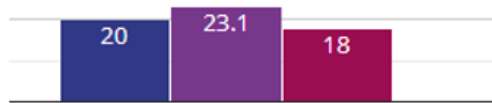
### Writing Expected Standard+



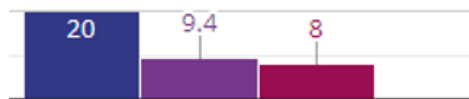
### Maths Expected Standard+



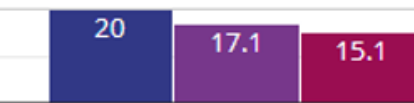
### Reading Greater Depth



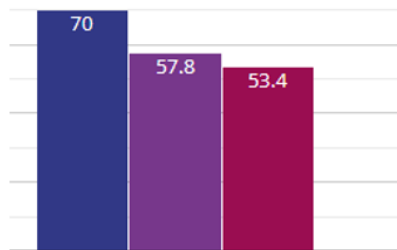
### Writing Greater Depth



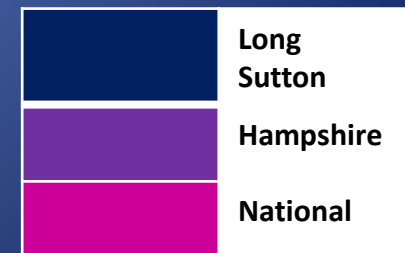
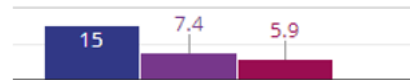
### Maths Greater Depth



### RWM Combined Expected Standard+



### RWM Combined Greater Depth

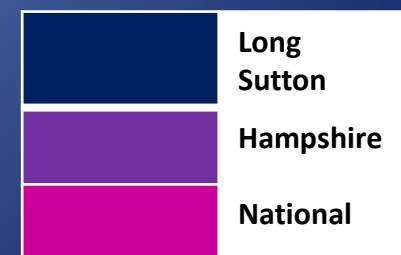
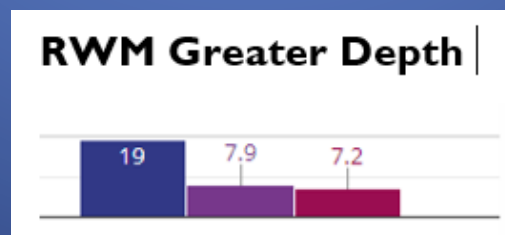
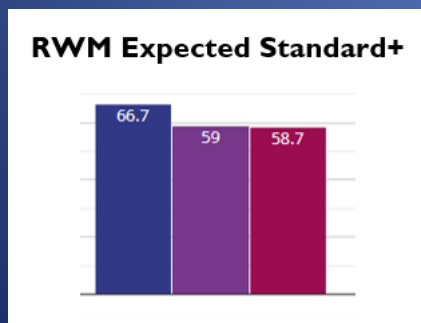
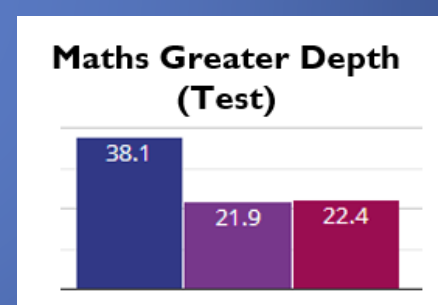
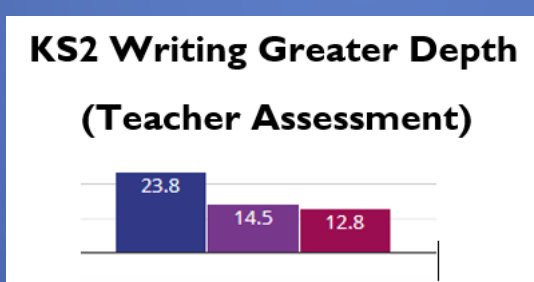
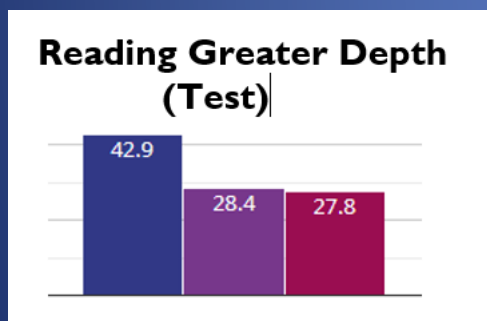
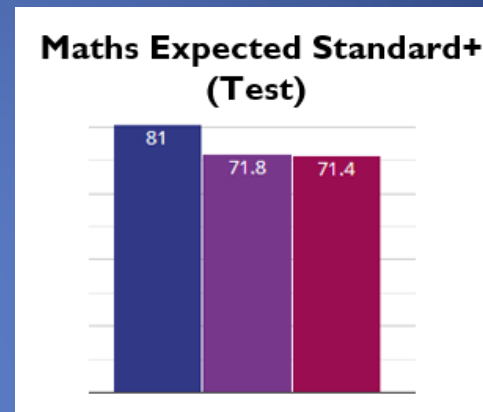
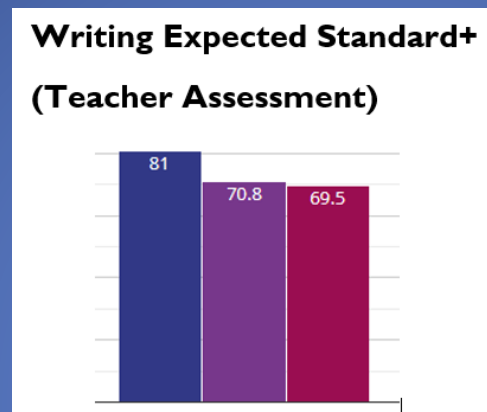
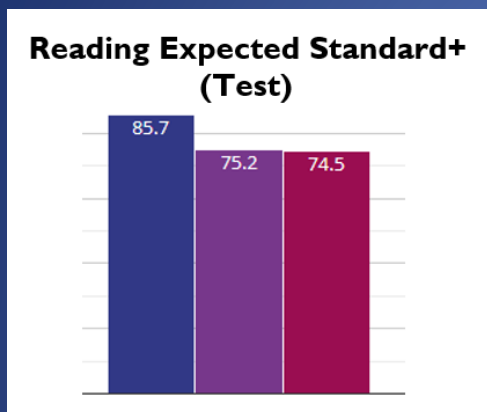




# High Attainment: 2022 Results



## Key Stage 2





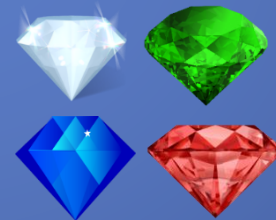
# Our Curriculum & Approach

## CURRICULUM INTENT

We define 'curriculum' as everything our children experience as they journey through our school, so that they become children who:

Are kind and loving citizens	Are courageous, resilient learners	Aspire to be the best they can be	Are numerate and literate	Can express their thoughts and communicate effectively
Use what they learn to make a positive difference	Have a strong sense of their place in the world	Respect and care for the natural environment	Develop a sense of self-worth	Acquire appropriate knowledge and skills

TRAILBLAZER



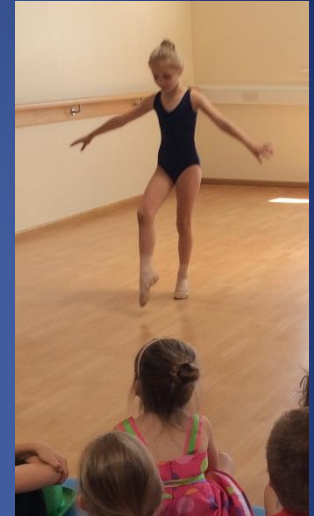
The **ZONES** of  
Regulation®

**ORACY:**  
THE ABILITY TO COMMUNICATE EFFECTIVELY  
USING SPOKEN LANGUAGE.





# The Arts





# Sport





“They have both excelled and gained so much confidence by being at a smaller, more inclusive school.”

“I think the mixed year groups have had a hugely positive impact on my children. When they are the youngest group, they have the older ones to learn from and look up to, and when they are the older group, they gain in confidence when helping the younger ones and showing them what they are capable of.”

## Our small school: parental views

“For me, the small size means greater ability to nurture - you know that whatever the needs of your child, they will be met. All staff know all children therefore easy transitions up the school; being a big fish in a small pond means everyone gets opportunities to stand out whether it's speaking parts in plays, performing in concerts etc; allows greater flexibility re differing needs - gives more confident and able children the chance to be pushed, and less able/confident the chance to take things more slowly.”

“The school feels small enough to have a cosy, family-feel to it yet has larger school facilities and strategy. iPads go hand in hand with welly-walks at Long Sutton! The head teacher knows all the children by name which makes communication easy.”

# Transition & Wrap Around Care: parental views

“There is a wonderful buddy system that takes place between the oldest children and the new starters, a job that the Year 6 children take very seriously! And the preschool that takes place in May is a wonderful way of introducing families to the building and staff in a very welcoming way.”

“It took X ages to settle at her nursery and she still had wobbles at the end. She absolutely loves big school - she’s settled really quickly..... She comes out laughing most days and says how many fun things there are to do.

Long Sutton Church of England Primary School is the most wonderful school and I have never had any doubt that it is the right school for us.”

# Catchment Area



Wider area where many pupils live  
10-15 minute drive from Long Sutton

School catchment area