

Long Sutton Attainment Data 2022

Pupil Outcomes for the end of the academic year 2021-22

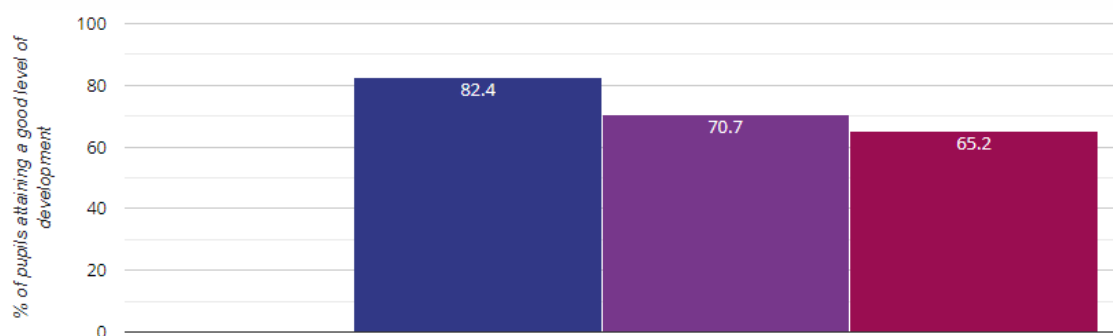
Key:

	Long Sutton Data
	Local Authority Data (Hampshire)
	National Data

We are delighted with our attainment data, which is above Local Authority and National averages in almost all areas. The strong outcomes for children across the school reflect the carefully chosen priorities, focussed 'recovery' work and consistently high quality of teaching received by our children, coming out of 2 years of significant disruption due to the Covid-19 Pandemic. These graphs are produced by the Local Authority; further national analysis and comparative data will be available to schools later in the Autumn term 2022.

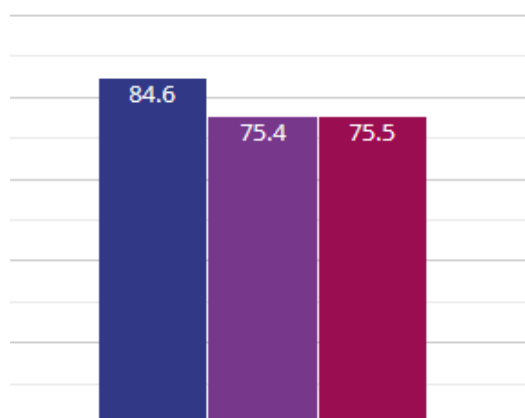
EYFS Early Years Foundation Stage Profile: End of Reception)

Children are assessed as achieving a 'Good level of Development' (GLD) if they achieve their ELG (Early Learning Goal) in the Prime Areas (Physical Development, Communication & Language and Personal, Social & Emotional Development) **and** in the Specific Areas of Literacy (reading & writing) and maths. This graph shows the % of children who achieved GLD.



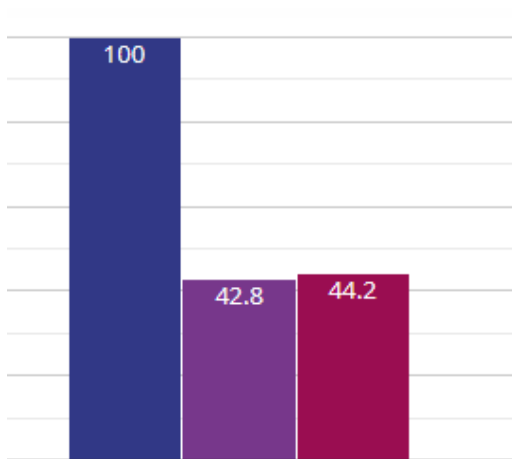
Year 1 Phonics Screening Check

% of children who passed the screening check. All Year 1 children sit this check in June.



Year 2 Phonics Resit Check

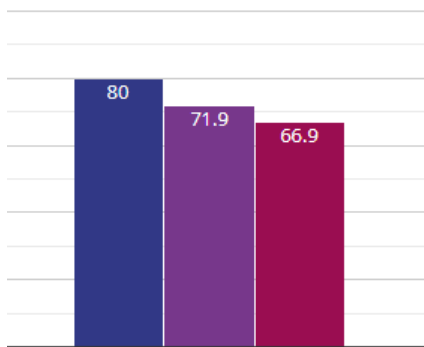
Any Year 2 children who did not pass the screening check in Year 1 are retested at the end of Year 2. This graph shows the % of children who passed the resit at the end of Year 2.



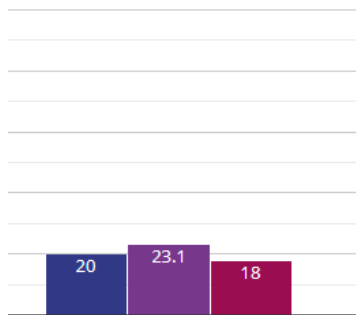
KS1: Key Stage 1 (End of Year 2) SATs Results

Children sit statutory tests, which are marked internally. The results of these tests are used alongside children's day to day work in school and other school assessment information to reach a teacher assessment judgement for reading, writing & maths, against national criteria. Children working at 'age-related expectation' are assessed as reaching the 'expected standard;' children working at a higher level are assessed as reaching 'greater depth.'

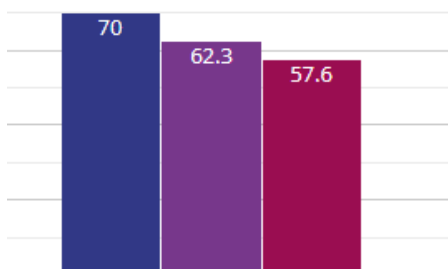
KS1 Reading Expected Standard+



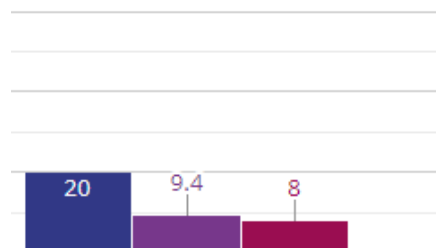
KS1 Reading Greater Depth



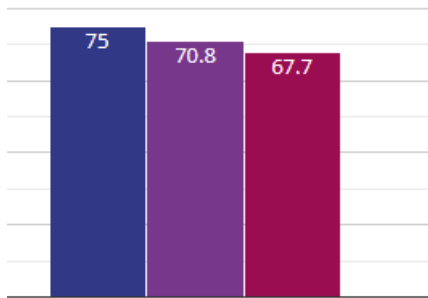
KS1 Writing Expected Standard+



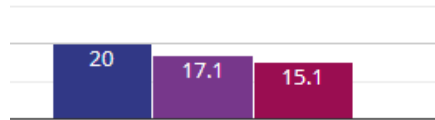
KS1 Writing Greater Depth



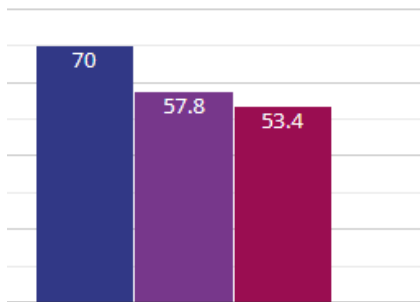
KS1 Maths Expected Standard+



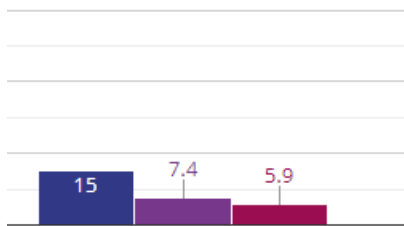
KS1 Maths Greater Depth



KS1 RWM Combined KS1 Expected Standard+



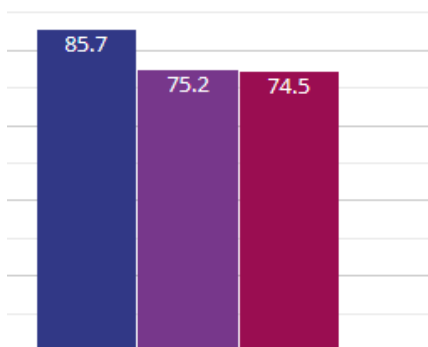
KS1 RWM Combined Greater Depth



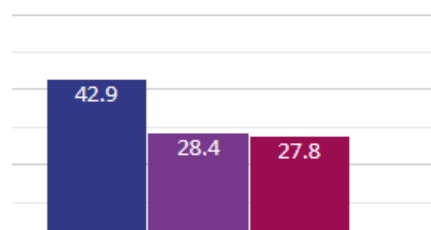
KS2: Key Stage 2 (End of Year 6) SATs Results

Children sit statutory tests, which are sent off for external marking, in reading, maths and grammar, punctuation & spelling. Children's writing is assessed by teacher assessment against a set of national criteria and is moderated within school, with other local schools and every 4 years by the local authority.

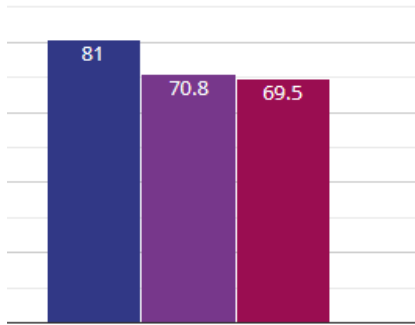
KS2 Reading Expected Standard+



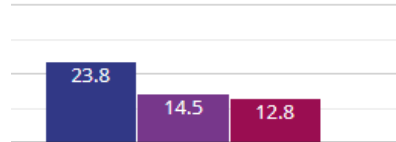
KS2 Reading Greater Depth



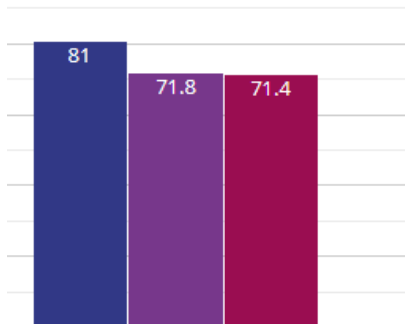
KS2 Writing Expected Standard+



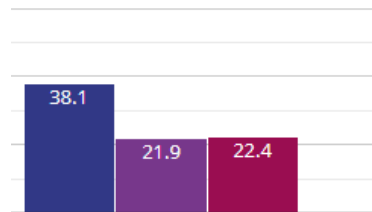
KS2 Writing Greater Depth



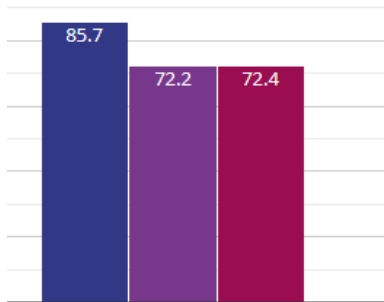
KS2 Maths Expected Standard+



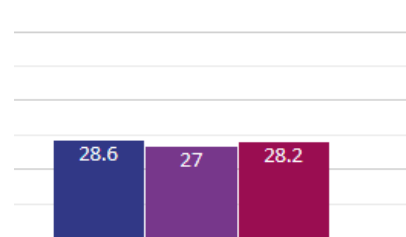
KS2 Maths Greater Depth



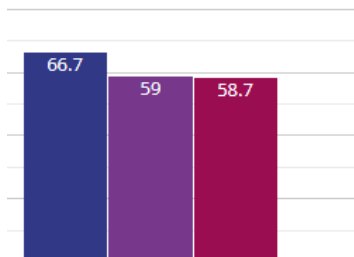
KS2 Grammar, Punctuation & Spelling Expected Standard+



KS2 Grammar, Punctuation & Spelling Greater Depth



KS2 RWM Expected Standard+



KS2 RWM Greater Depth

